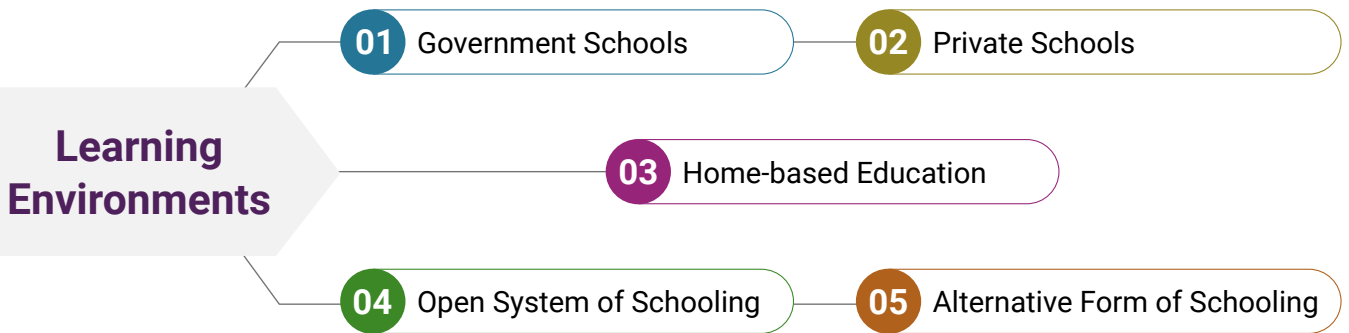




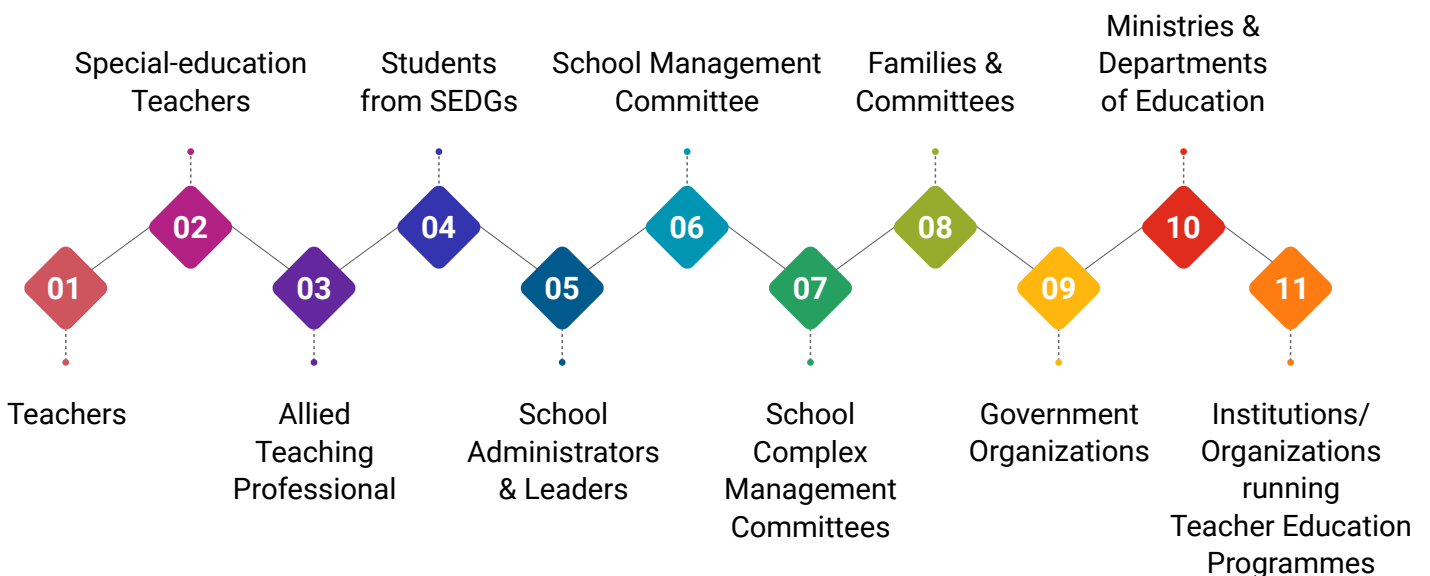
## Centre for Educational and Social Studies

# A Glimpse into the National Guidelines and Implementation Framework for Equitable and Inclusive Education (NGIFEIE)

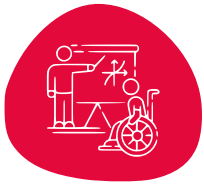
The Department of School Education and Literacy (DSEL), Ministry of Education has released “National Guidelines and Implementation Framework for Equitable and Inclusive Education”. The guidelines are based on the recommendations from the National Education Policy 2020 to ensure that all students with diversified learning needs are able to thrive with equal opportunities in an inclusive environment. Here is a glimpse of the guidelines and implementation framework.



## Stakeholders



## Major Components of NGIFEIE



Guidelines for Creative Inclusive Schools



Guidelines for Home-based Education

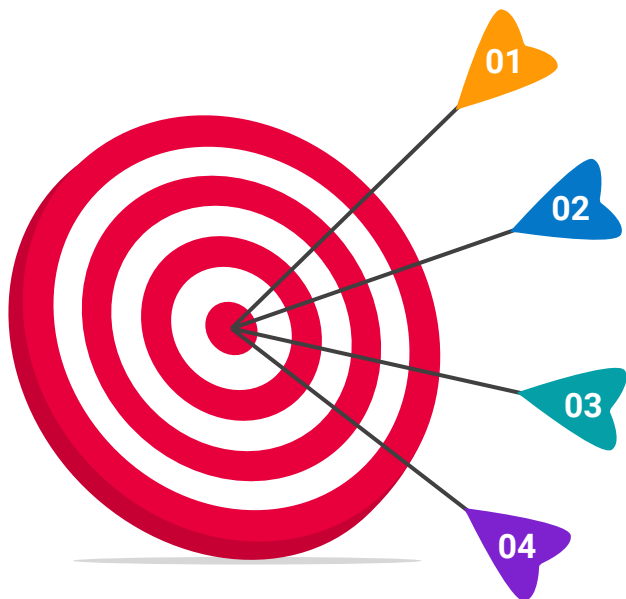


Guidelines for Teacher Education



Guidelines for Collaboration with Different Organizations

## Objectives of the Guidelines



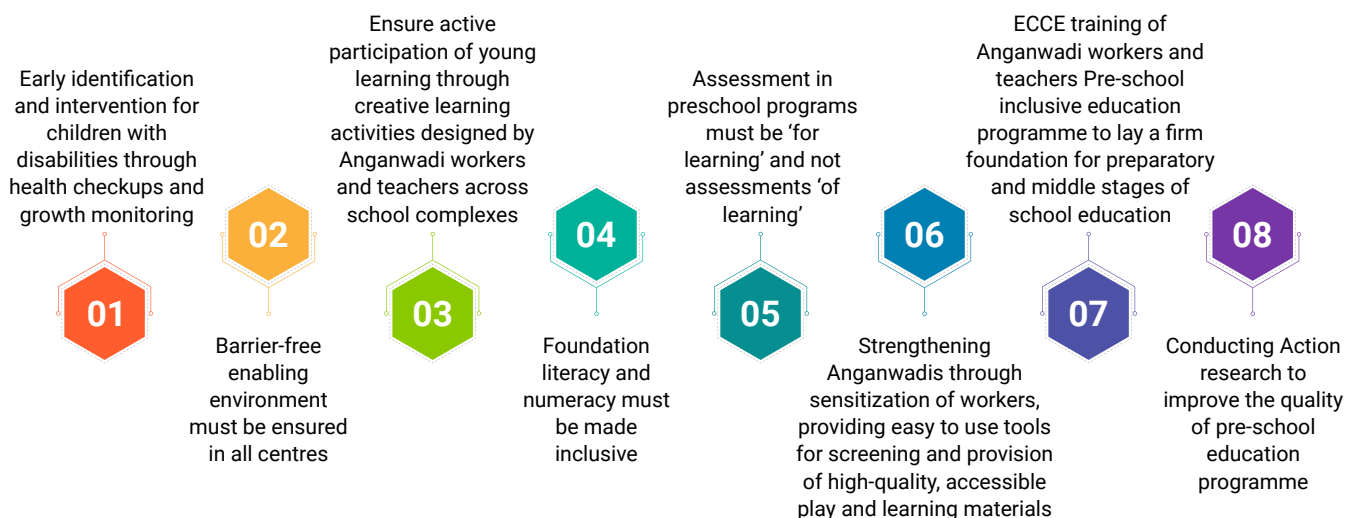
Develop a sense of belongingness, respect and accepting diversity

Sensitize stakeholders and capacity building of teachers

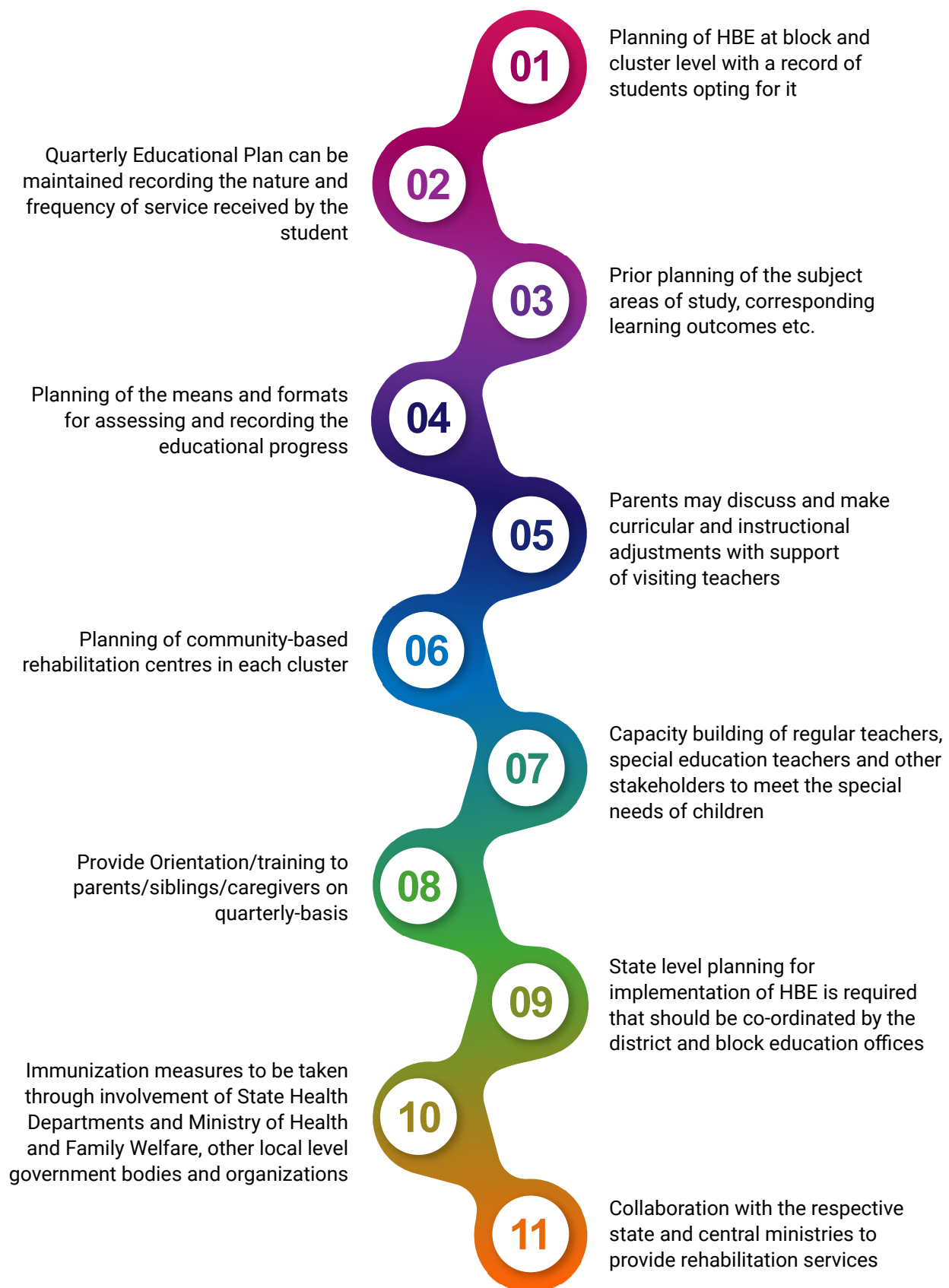
Facilitate multi-sectorial coordination amongst concerned government agencies and other organizations

Provide implementation tools for ensuring 'Learning for ALL'

## Guidelines and Implementation Mechanism for Foundational Stage of Schooling



# Guidelines and Implementation Mechanism for Home Based Education (HBE)



# Guidelines and Implementation Mechanism for Creating Inclusive School

01

Develop a vision for schools to facilitate inclusive education

Discourage any kind of discrimination, negative dispositions and violence amongst students

02

03

Include parents of SEDGs in the school management committee

Encourage collaboration with NGOs, community, parents and other relevant organizations

04

05

Making curriculum flexible, culturally and socially accommodating and facilitating overall development

Total communication approach to transact the curriculum

06

07

Development assessment tools that are inclusive by design

Establish/strengthen equitable and inclusive education (EIE) cell at state/UT Department of Education

08

09

Strengthen resource centres by equipping them with assistive devices, supportive services, vocational exposure & skill training, and human resources

Taking support from local language speakers, sign language interpreters to facilitate communication in the mother tongue

10

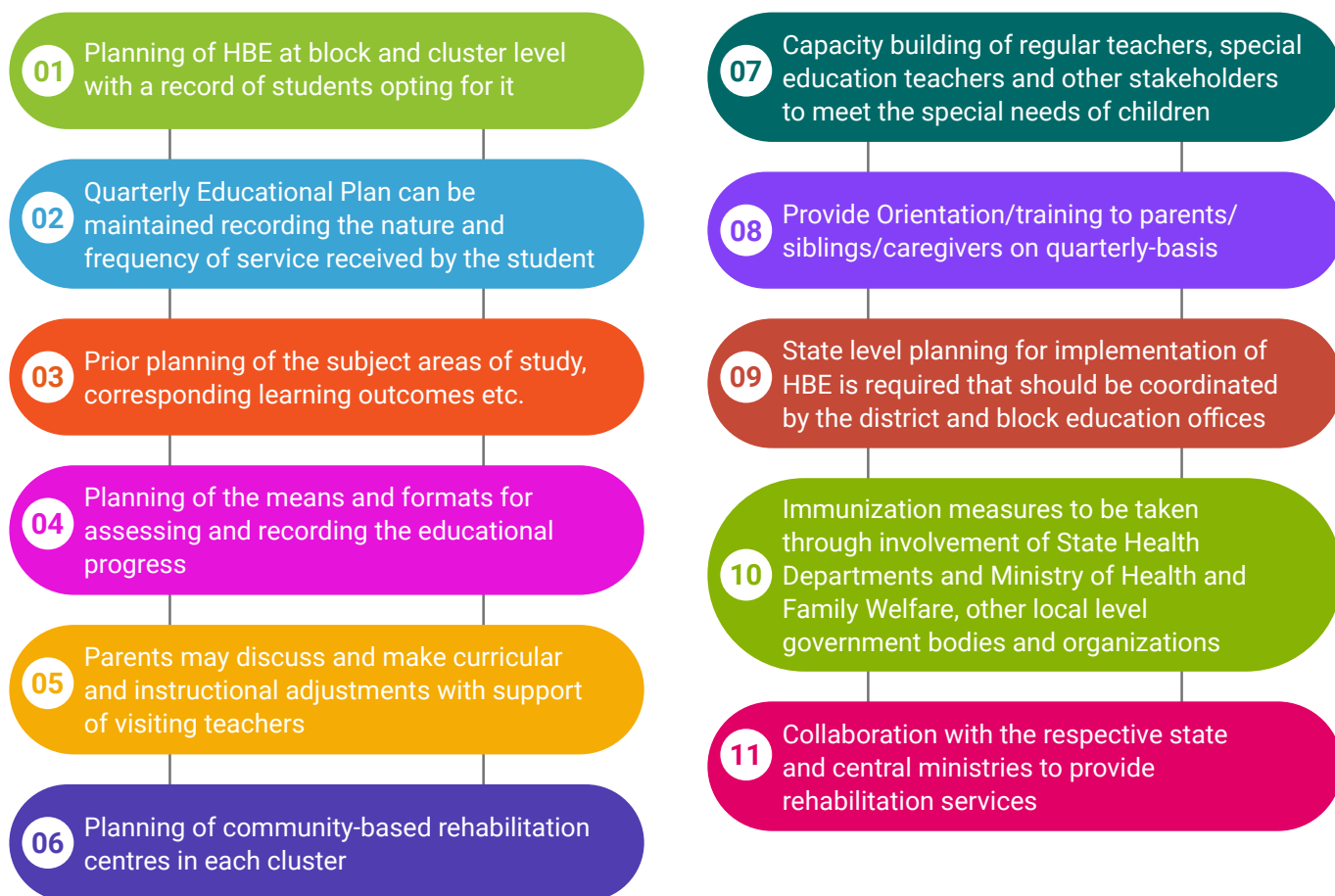
11

Ensure availability of counselling and guidance services at the school complexes/resource centres

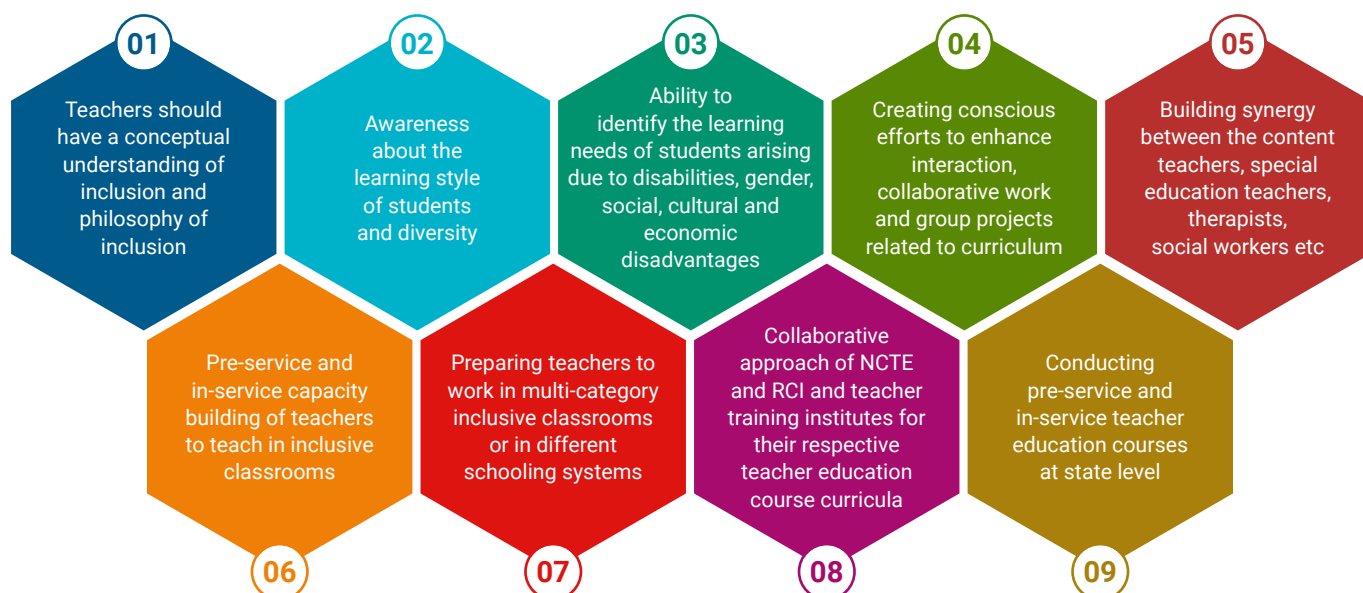
Appraisal for school inclusiveness for facilitating an accessible school environment

12

## Guidelines and Implementation Mechanism for Home Based Education (HBE)



## Guidelines and Implementation Mechanism for Teacher Education



## Guidelines and Implementation Mechanism for Collaboration with Different Organizations

