



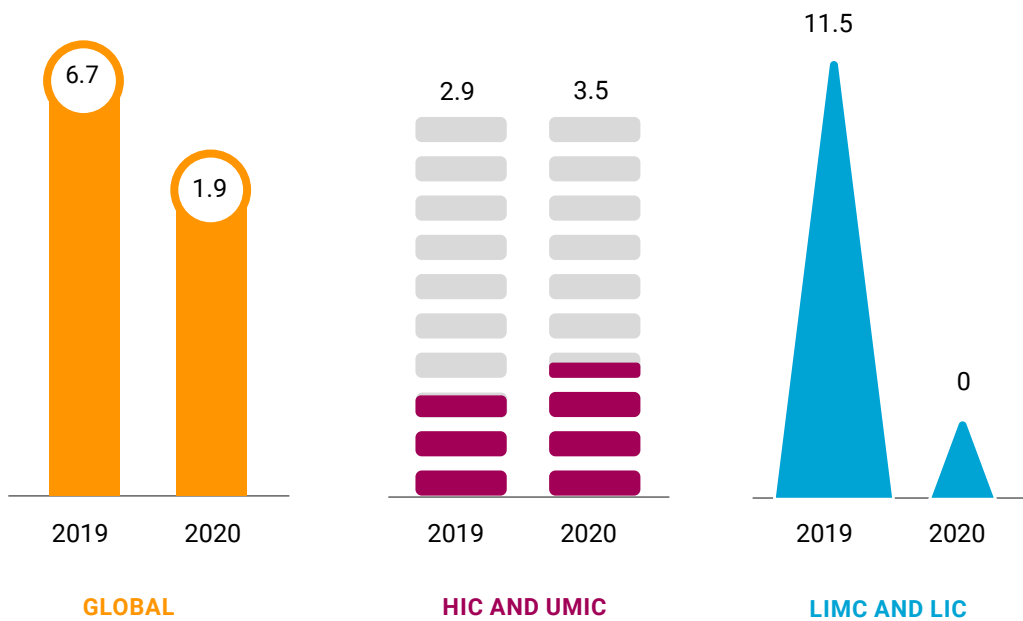
Centre for Educational and Social Studies

Highlights of Education Finance Watch and Allocation of Education Budget in India and Karnataka

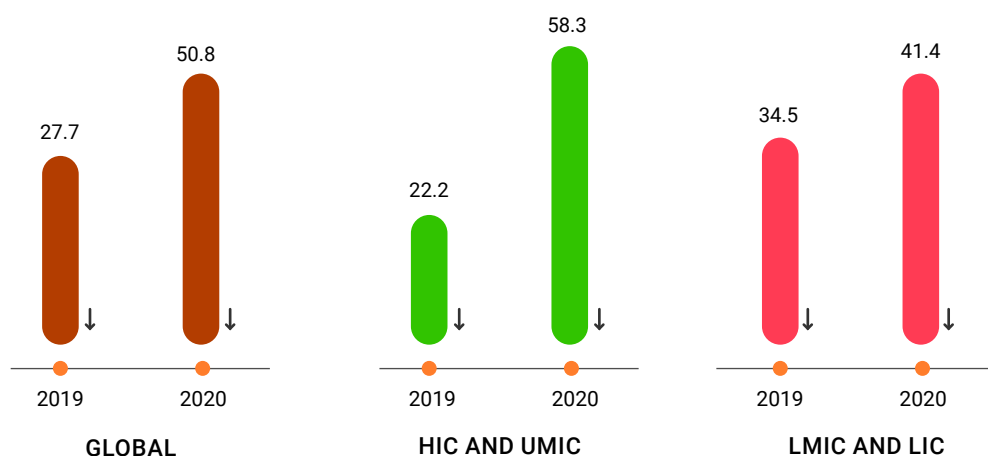
The Education Finance Watch (EFW) is a collaborative effort among the World Bank (WB), the Global Education Monitoring (GEM) Report, and the UNESCO Institute of Statistics (UIS). The EFW 2021 captured the preliminary effects of COVID-19 on the education budgets of countries. In continuation, the EFW 2022 sheds further light on the impact of the pandemic on global education financing in high-income countries (HICs), low-income and lower-middle income countries (LICs and LMICs), as of May 2022. With this, a glimpse of the allocation for education sector in central and state budgets are given.

Key Findings from EFW 2022 –

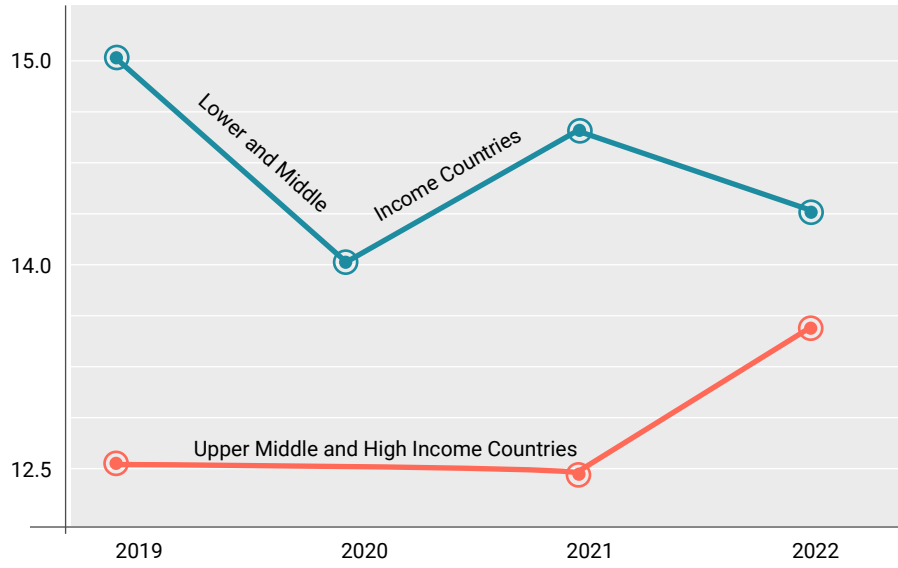
Changes in Real Education Spending Between Pre-Pandemic (2019) and Post-Pandemic Onset (2020)



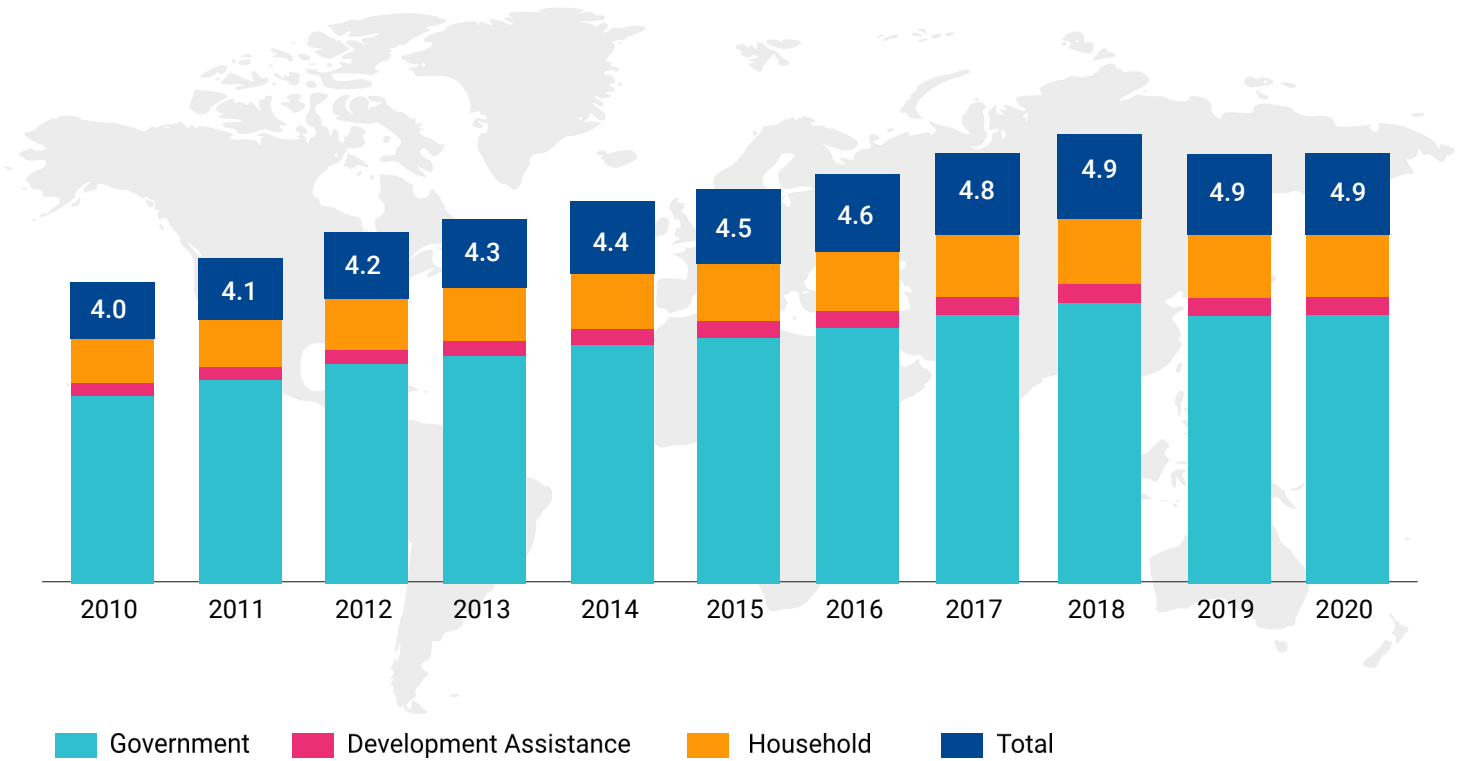
Share of Countries Decreasing Education Spending from Previous Year (%)



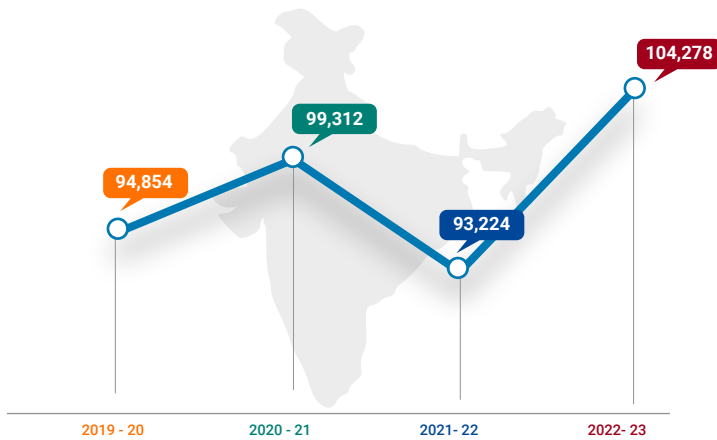
Share of Education in Total Government Budget, 2019–2022



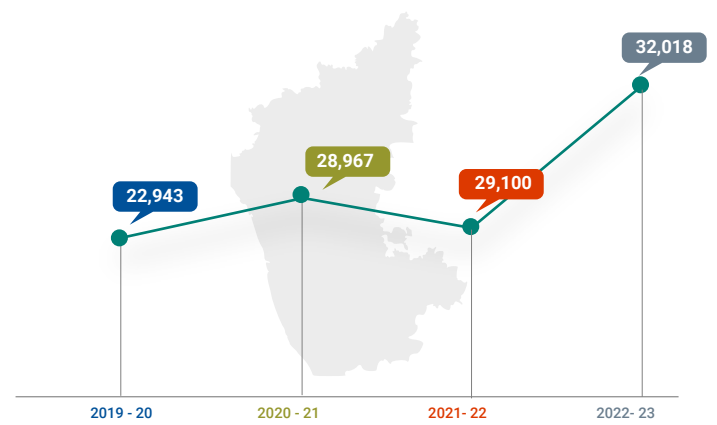
Education Spending by Government, Household and Official Development Assistance



Budget Allocated to Education Sector in India (In Crores)



Budget Allocated to Education Sector in Karnataka (In Crores)



The National Education Policy 2020 has recommended the spending on Education to be 6% of Indian GDP