

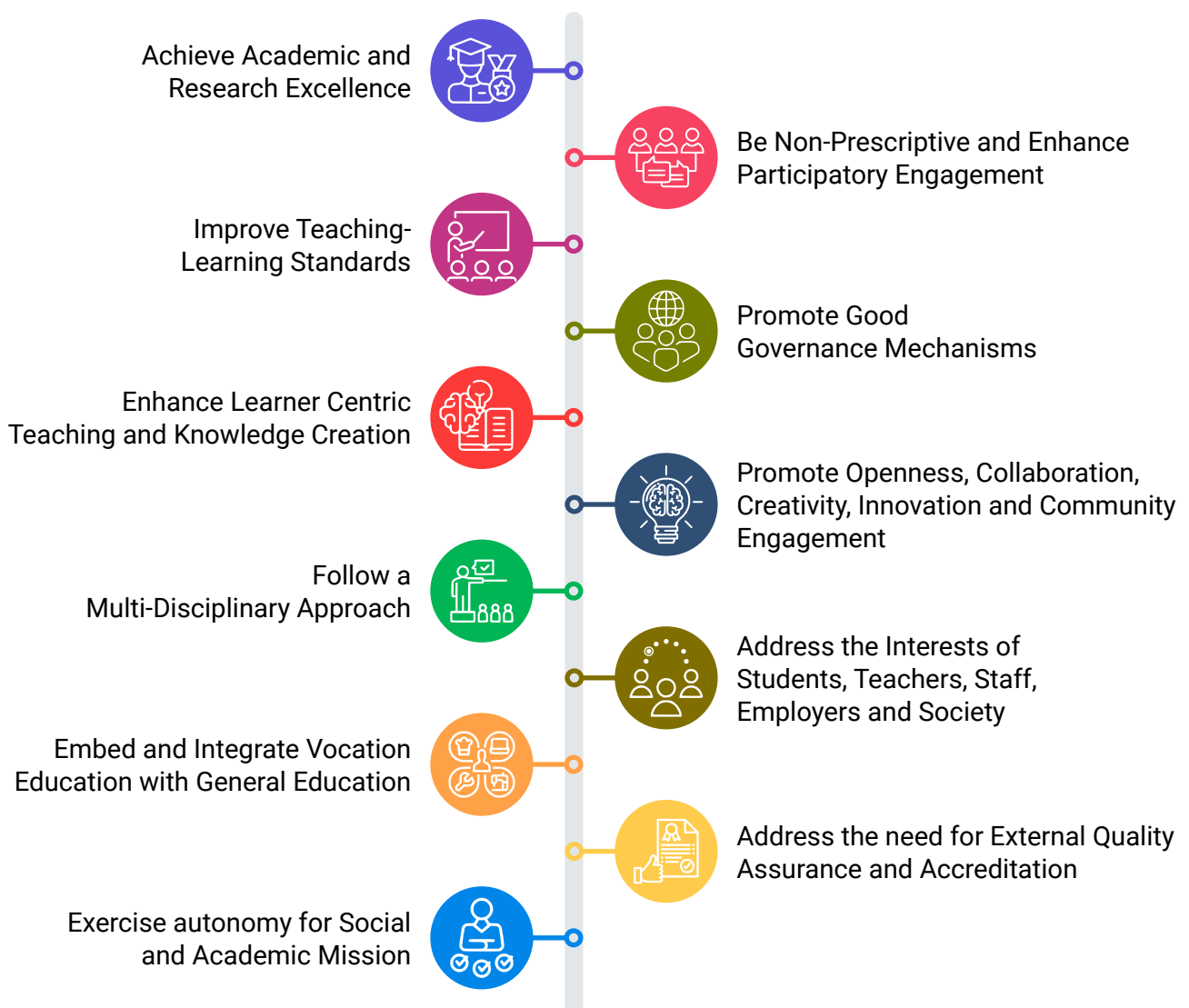


Centre for Educational and Social Studies

Highlights of Draft UGC Guidelines for Institutional Development Plan for Higher Education Institutions

UGC has released draft guidelines on “Institutional Development Plan” for individual HEIs to develop their own institutional development plans to further the aims set out in NEP 2020. The framework shall provide an insight to HEIs as how to enhance the quality of education at par with the best institutions to attract the best talent in teaching and learning.

Fundamental Principles of IDP that enable HEIs to



Objectives and Goals to be achieved by IDP



Articulate a Clear Vision and Mission of the Institution



Assess Institutional Developmental needs



Identify Capacity and Organizational Gaps



Develop Annual Activity Plans



Establish a Transparent System for Holistic and Inclusive Growth



Establish an Operative Framework to Promote Internationalization, Entrepreneurship etc.



Ensure Meaningful Engagement of all Stakeholders



Quantify Institution's Goals using Indicators and Time-Bound Targets



Undertake Periodic Reviews and Appropriate Measures

Institutional Development Plan Framework



Indicatives of Physical Infrastructure

- Smart Campus.
- Green/Sustainable Building.
- Library/Digital Resource Centre.
- Lecture Complex & Classrooms.
- Administrative Blocks & Tutorial Rooms.
- Facilities to Faculty & Staff.
- Laboratories & Research Centres.
- Games & Sports Facility.
- Meeting Rooms, Auditorium & Conference Rooms.
- Incubation Centre and Research Park.
- Botanical Park/Garden.
- Vocational Education, Training and Skilling Infrastructure.
- International Student Centre.
- Health and Well Being.



Digital Infrastructure

- Provide Robust ICT Infrastructure.
- Dedicated Campus Area Network.
- Development of Online Teaching Platform & Tools.
- Establishment of a Digital Repository of Content.
- Dashboard to monitor various other infrastructures.
- Guidelines for the Repository of Information.
- Guidelines for the Maintenance of Records.
- Disaster Recovery Site.



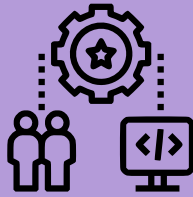
Academic Infrastructure

- Institutional SWOC/SWOT analysis.
- Develop Best Practices by Doing ABCD (Advantages, Benefits, Constraints and Disadvantages) Analysis
- Develop Future Strategy through Predictive Analysis.
- Create & Retain Quality Faculty.
- Design Flexible Curriculum and Introduce Multidisciplinary.
- Identify Appropriate Industry Experts in Curriculum Design & Implementation.
- Design Appropriate Mechanism & Infrastructure for Upgradation of Curriculum.
- Develop Leaders as Role Models through Commitment & multi-Tasking Analysis.
- Ensure Growth and Expansion of the University through Environmental Analysis.
- Introduce Technology to facilitate Blended Mode of Learning, and Creation and Delivery of Digital Content etc.



Research & Intellectual Property Infrastructure

- Involve all the Stakeholders in Research, Innovation, & Documentation.
- Create a Culture of Innovative Thinking through Research and Societal Contributions.
- Promote Systematic Institutional Research.
- Collaborate with Numerous Universities and Research Centres.
- Invite Industry and Community to be a partner in Research and Development Activities.
- Focus on Quality Research Programmes.
- Encourage Faculty Members through Incentives.



Supportive and Facilitative Infrastructure

- Regulations to be framed as Learner-Centric.
- Transparency in Administration.
- Choosing Visionary Leaders.
- Developing Mutual Trust and Respect between Stakeholders.
- Develop an Institutional Tradition and Culture from Local Tradition and Culture.
- Accountability based on Job Description at all Levels.
- Support University Social Responsibility.
- Support Under-Represented Learners Ensuring Access to Education.
- Make Curriculum more Inclusive.
- Develop Bridge Courses for Students coming from Disadvantaged Educational Backgrounds.
- Strictly Enforce All No-Discrimination and Anti-Harassment Rules.



Infrastructure for Networking & Collaborations

- Involve Alumni in various Processes of the Universities.
- Identify and Involve various Industries.
- Network with Student Feeding Institutions.
- Engage in International Student Programmes.
- Collaborate with National and International Universities.



Governance Infrastructure

- Provide Autonomy with Accountability with all Aspects of Governance.
- Processes and Quality Assurance Mechanisms to be put in place.
- Involve all Stakeholders including Alumni.
- Define Various Levels of Financial Autonomy.
- Focus on Good Governance.
- Ensure Effective Leadership, Strategic Direction Making and Operational Excellence.



Financial Infrastructure & Funding Models

- Funding Sources.
- Budget Allocation.
- Transparency.
- Financial Sustainability.
- Investment Strategy.
- Collaboration.
- Stakeholder Engagement.
- Additional Outreach Modules for Fund Generation.